

## I2F MEDIA PRODUCTS

Inter2Face has been active in automation and interactive applications for many years.

At ISE we present I2F MEDIA PRODUCTS, designed for any environment of audio-visual means, communication and media.

Out of six products, five are software; one is hardware. The focus is on:

- ✓ Bringing about a *convergence* between diverse digital media and techniques
- ✓ *Automation* with the aim to deal economically with costly resources and to communicate efficiently
- ✓ Playing images and sound of a *high quality*
- ✓ Making the control of a "show" *accessible and manageable* for the user.

We have grafted our products onto **standard available hard- and software.**

A Pc is nowadays reliable beyond questioning and can function day and night without any problem!

Minimum requirements are:

- ✓ Processor capacity 1,2 GHz
- ✓ OS Windows 2000 or XP
- ✓ A video chip with 8MB available memory (for an optimal performance >64MB).

What we are saying is: you don't need to invest in any specific hardware. Create and control your show with what you have!



### I2F MEDIABRICK: THE CORNERSTONE

**This software product is a show-controller and video server all in one.**

#### I2F MediaBrick

1. reproduces media and switches between diverse media, if desired in high resolution.
2. can arrange layers of images on a screen, recast, mask, and other features
3. can edit video files (non-linear editing)
4. controls a computer economically 24 hours a day and 365 days a year
5. can perform and control at least 5 different tasks simultaneously
6. uses the standard 5 inputs & 8 outputs of a Pc and furthermore the serial, TCP/IP and USB connexions
7. understands and communicates standard industrial protocols such as DMX, midi etc.
8. can be controlled by a touch screen
9. is fully autonomous, but one I2F MediaBrick can integrate and control several others.

**Glossary:**

**Media:** any digital file of images or sound (jpg, gif, Mpeg2, MP3, AVI,...) but also light, fragrances,.... *The resolution of the image is only limited by the source material.*

**Switching:** between files. We define a show to a single frame, not with a timeline but with easy associations and following a logic build-up of the programme.



Assign definitions: making a list of events



Define actions: e.g. lamp ON/OFF

**Economic:** Pc's, projectors and other device, controlled by I2F MediaBrick, can be kept in standby modus until triggered by a motion detector or sensor.

**Autonomous:** I2F MediaBrick provides a completely independent stand-alone set-up. However one specific I2F MediaBrick licence can be determined as a "master" and instruct several other Pc's with I2F MediaBrick ("slaves").

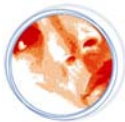
**This software performs a multitude of tasks. An overall control can be exercised without the need of an (expensive) central controlling device!**

See our applications on: <http://i2f.mediaproducts.info>

The other I2F Media Products are rather accessory. They contribute to a creative process.



**I2F MediaBrick**



**I2F MediaDisplay**



**I2F MediaGuideEditor**



**I2F MediaComm's**



**I2F Mediacontroller**



**I2F MediaPorts**



ISE, hall 6, booth H57

Inter2Face bvba Pelgrimstraat 9/4 B-3000 Leuven Belgium www.inter2face.com